

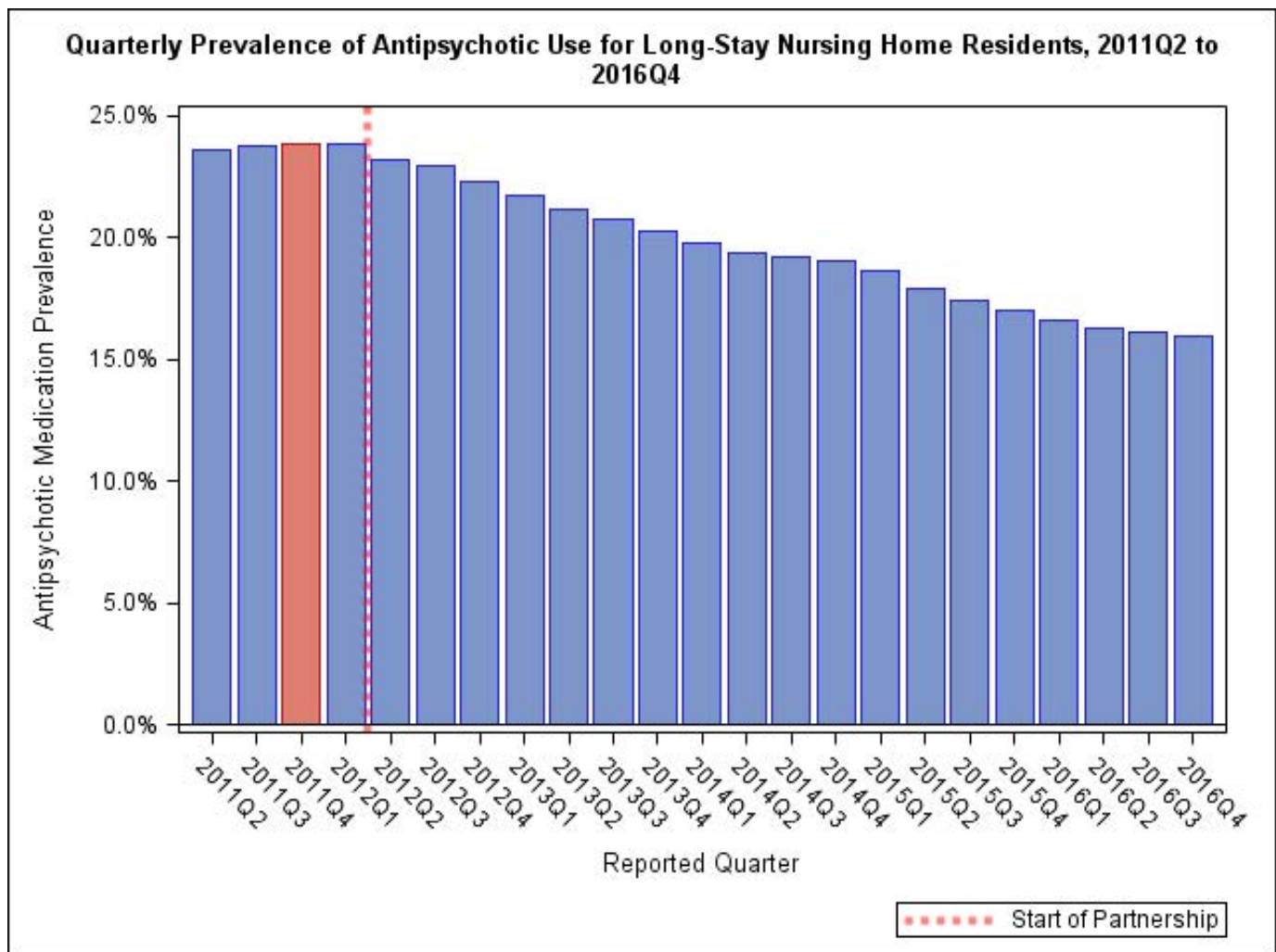
National Partnership to Improve Dementia Care in Nursing Homes: Antipsychotic Medication Use Data Report (March 2017)

The National Partnership to Improve Dementia Care in Nursing Homes is committed to improving the quality of care for individuals with dementia living in nursing homes. The National Partnership has a mission to deliver health care that is person-centered, comprehensive and interdisciplinary with a specific focus on protecting residents from being prescribed antipsychotic medications unless there is a valid, clinical indication and a systematic process to evaluate each individual's need. The Centers for Medicare & Medicaid Services (CMS) promotes a multidimensional approach that includes; research, partnerships and state-based coalitions, revised surveyor guidance, training for providers and surveyors and public reporting.

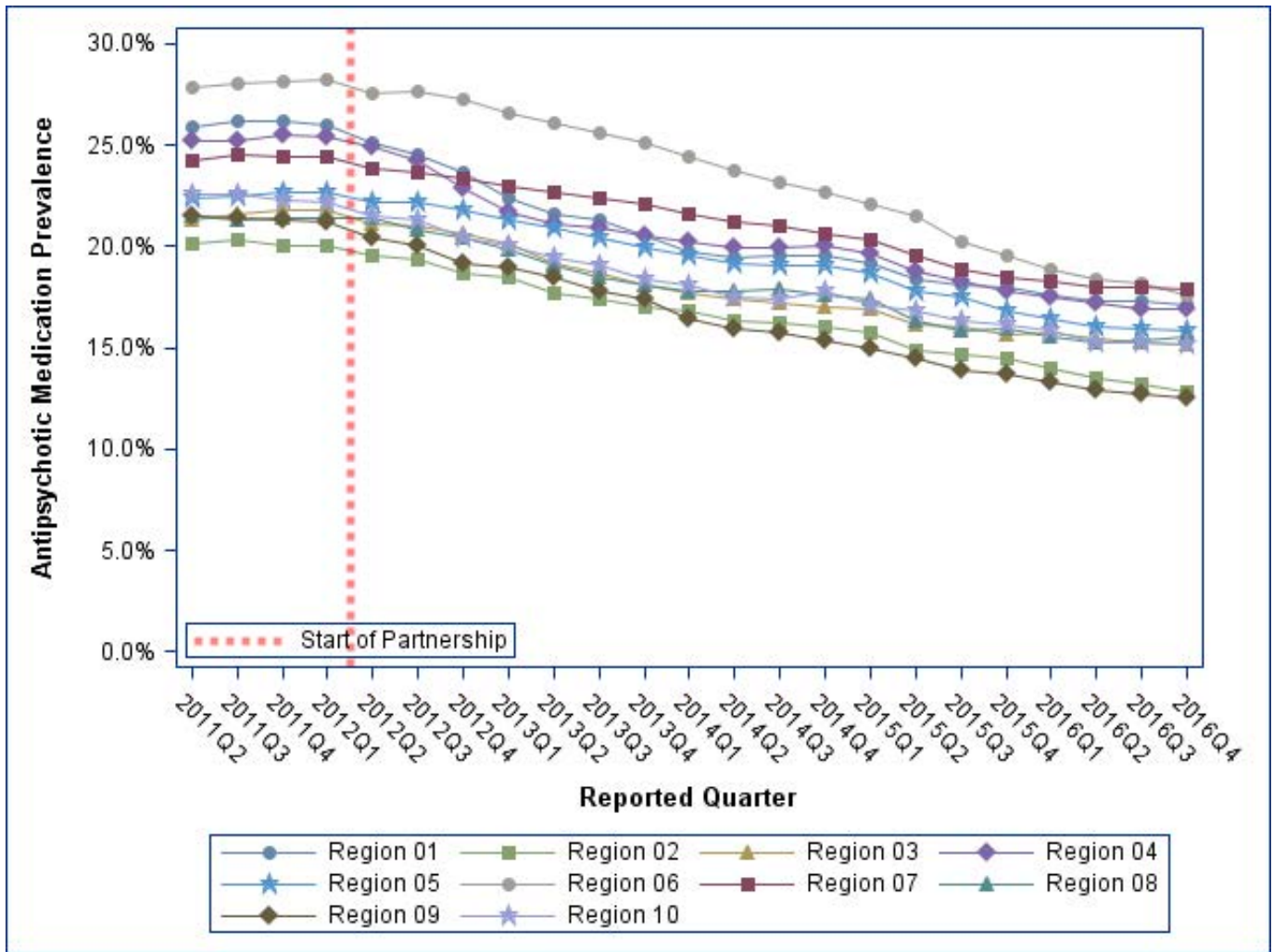
CMS is tracking the progress of the National Partnership by reviewing publicly reported measures. The official measure of the Partnership is the percentage of long-stay nursing home residents who are receiving an antipsychotic medication, excluding those residents diagnosed with schizophrenia, Huntington's Disease or Tourette's Syndrome. In 2011Q4, 23.9 percent of long-stay nursing home residents were receiving an antipsychotic medication; since then there has been a decrease of 33.2 percent to a national prevalence of 16 percent in 2016Q4. Success has varied by state and CMS region, with many states and regions having seen a reduction of greater than 30 percent.

A four-quarter average of this measure is posted to the Nursing Home Compare website at <https://www.medicare.gov/nursinghomecompare/>.

For more information on the National Partnership, please send correspondence to dnh_behavioralhealth@cms.hhs.gov.



Quarterly Prevalence of Antipsychotic Use for Long-Stay Residents, CMS Regions



Quarterly Prevalence of Antipsychotic Use for Long-Stay Residents, States

State	2011Q4	2012Q1	2012Q4	2013Q1	2013Q4	2014Q1	2014Q2	2014Q3	2014Q4	2015Q1	2015Q2	2015Q3	2015Q4	2016Q1	2016Q2	2016Q3	2016Q4	Rank in 2016Q4 (lower=better)	Percentage point difference (2011Q4-2016Q4)	% Change
ALABAMA	27.3%	27.5%	24.0%	22.9%	22.2%	22.13	22.4%	22.0%	21.9%	21.7%	20.6%	20.1%	19.6%	19.2%	18.6%	19.0%	18.9%	44	-8.45	-30.9%
ALASKA	13.7%	13.4%	12.4%	12.5%	12.8%	12.75	14.8%	15.9%	16.4%	14.4%	14.9%	15.4%	15.0%	12.9%	11.3%	12.1%	10.0%	2	-3.71	-27.0%
ARIZONA	22.7%	22.7%	20.9%	20.4%	20.7%	18.55	17.5%	18.4%	17.7%	17.3%	17.6%	17.6%	17.0%	16.7%	15.7%	14.1%	14.0%	13	-8.79	-38.6%
ARKANSAS	26.1%	26.1%	25.5%	25.1%	22.8%	21.70	19.9%	18.8%	17.9%	17.6%	17.0%	16.9%	16.9%	16.6%	15.9%	15.7%	15.5%	23	-10.65	-40.8%
CALIFORNIA	21.6%	21.3%	19.2%	19.0%	17.1%	16.34	15.8%	15.5%	15.2%	14.7%	14.2%	13.6%	13.5%	13.1%	12.7%	12.7%	12.4%	6	-9.14	-42.4%
COLORADO	19.9%	19.9%	19.4%	18.5%	16.4%	16.42	16.1%	16.0%	15.9%	16.1%	15.3%	15.2%	14.9%	14.9%	14.2%	14.1%	14.5%	17	-5.45	-27.4%
CONNECTICUT	26.0%	25.8%	23.2%	22.4%	21.0%	20.41	20.3%	20.1%	20.5%	19.9%	18.6%	17.5%	16.9%	16.5%	16.1%	16.5%	16.3%	29	-9.73	-37.4%
DELAWARE	21.3%	21.8%	20.9%	18.0%	15.5%	15.47	14.7%	14.8%	14.8%	14.5%	14.2%	13.5%	12.6%	12.9%	14.1%	13.5%	12.9%	8	-8.42	-39.6%
DISTRICT OF COLUMBIA	20.0%	19.4%	18.2%	17.4%	14.5%	14.84	15.0%	14.7%	14.1%	13.1%	12.8%	13.0%	12.9%	11.6%	11.9%	11.3%	10.9%	3	-9.13	-45.7%
FLORIDA	24.5%	24.6%	23.3%	22.7%	21.2%	21.18	20.6%	20.6%	20.8%	20.3%	18.9%	17.6%	16.9%	16.4%	16.0%	15.8%	15.9%	27	-8.56	-35.0%
GEORGIA	28.7%	28.7%	24.2%	22.7%	21.1%	20.59	20.3%	20.1%	20.2%	20.1%	19.9%	19.5%	19.8%	19.7%	19.4%	19.0%	18.9%	46	-9.71	-33.9%
HAWAII	12.5%	13.5%	11.7%	11.0%	11.6%	8.54	9.1%	8.7%	8.4%	10.9%	8.1%	7.6%	7.6%	7.6%	7.8%	6.9%	7.5%	1	-4.99	-40.1%
IDAHO	25.3%	26.4%	23.9%	23.1%	19.3%	19.33	18.9%	18.4%	17.2%	18.7%	16.8%	16.3%	16.1%	15.7%	16.4%	17.0%	18.4%	43	-6.96	-27.5%
ILLINOIS	25.7%	25.6%	25.5%	25.0%	24.0%	24.14	23.7%	23.5%	23.1%	22.9%	22.1%	21.7%	20.0%	19.6%	19.2%	19.2%	19.2%	47	-6.49	-25.2%
INDIANA	24.0%	24.1%	22.2%	21.7%	20.2%	19.85	19.2%	19.0%	18.9%	18.4%	17.1%	16.4%	15.9%	15.9%	15.8%	15.4%	15.5%	22	-8.57	-35.7%
IOWA	22.3%	22.0%	20.6%	20.2%	20.0%	19.71	19.3%	19.2%	18.9%	18.3%	17.6%	16.9%	16.2%	15.9%	15.3%	15.2%	15.1%	19	-7.25	-32.4%
KANSAS	26.1%	26.1%	25.1%	24.2%	23.0%	23.14	22.8%	23.2%	22.3%	22.2%	20.9%	20.4%	20.1%	20.5%	20.5%	20.3%	19.9%	51	-6.23	-23.8%
KENTUCKY	26.0%	26.0%	23.1%	21.9%	21.6%	21.16	20.9%	21.1%	21.1%	21.4%	20.1%	19.9%	20.3%	20.0%	19.9%	19.7%	19.3%	48	-6.70	-25.8%
LOUISIANA	29.7%	29.7%	28.6%	27.8%	26.5%	25.51	25.1%	25.0%	25.0%	24.9%	23.7%	22.3%	20.0%	19.1%	19.4%	18.5%	18.2%	41	-11.56	-38.9%
MAINE	27.2%	26.9%	24.2%	22.6%	20.1%	18.55	18.2%	19.1%	19.3%	18.9%	18.3%	18.1%	17.4%	17.2%	16.8%	17.5%	17.3%	37	-9.96	-36.6%
MARYLAND	19.8%	19.6%	17.7%	17.3%	15.9%	15.95	15.8%	15.4%	14.8%	15.0%	14.3%	14.0%	13.9%	14.5%	14.2%	13.4%	13.3%	10	-6.46	-32.7%
MASSACHUSETTS	26.7%	26.6%	24.5%	22.9%	21.2%	20.58	20.2%	20.1%	19.9%	19.4%	18.9%	18.9%	19.0%	18.5%	18.2%	18.0%	17.7%	39	-8.99	-33.6%
MICHIGAN	16.4%	16.4%	15.5%	14.9%	13.9%	13.66	13.4%	13.3%	13.7%	13.6%	13.4%	13.2%	13.2%	12.8%	12.6%	12.4%	12.2%	5	-4.24	-25.9%
MINNESOTA	19.0%	18.8%	18.0%	17.9%	16.6%	16.04	15.3%	15.1%	14.6%	14.5%	13.5%	13.8%	13.7%	13.7%	13.4%	13.9%	14.1%	14	-4.97	-26.1%
MISSISSIPPI	26.6%	26.3%	25.3%	24.7%	24.3%	23.79	23.0%	23.0%	23.1%	22.7%	21.9%	21.5%	20.4%	20.3%	20.6%	20.0%	19.5%	49	-7.12	-26.8%
MISSOURI	26.1%	26.0%	24.9%	24.6%	23.1%	22.18	21.6%	20.8%	20.7%	20.5%	20.1%	19.3%	19.2%	18.8%	18.5%	18.8%	18.9%	45	-7.27	-27.8%
MONTANA	21.5%	21.5%	19.5%	19.7%	17.2%	16.92	16.3%	17.0%	16.9%	16.2%	15.5%	15.0%	14.9%	14.4%	14.9%	14.8%	14.2%	15	-7.32	-34.1%
NEBRASKA	22.3%	22.9%	22.9%	22.5%	22.7%	21.97	21.4%	21.7%	21.6%	21.0%	20.4%	19.4%	18.7%	18.8%	18.3%	18.3%	18.2%	42	-4.12	-18.4%
NEVADA	20.3%	20.5%	20.2%	20.1%	19.7%	19.05	18.8%	19.3%	18.4%	17.9%	17.5%	15.7%	15.3%	15.0%	15.4%	15.1%	15.2%	21	-5.06	-25.0%
NEW HAMPSHIRE	25.5%	25.1%	23.7%	22.7%	20.1%	18.77	18.4%	18.6%	18.8%	17.7%	16.9%	17.5%	17.6%	16.5%	16.5%	16.8%	16.1%	28	-9.39	-36.8%
NEW JERSEY	17.9%	17.8%	17.1%	16.6%	15.1%	14.54	14.2%	14.3%	14.1%	13.7%	13.2%	12.9%	12.8%	12.5%	12.3%	12.0%	11.5%	4	-6.38	-35.6%
NEW MEXICO	21.7%	22.0%	22.2%	20.3%	18.1%	19.55	17.3%	16.9%	16.1%	15.8%	17.2%	16.2%	16.2%	17.0%	18.2%	16.4%	16.8%	40	-3.62	-16.7%
NEW YORK	21.3%	21.4%	19.7%	19.5%	18.2%	18.03	17.6%	17.4%	17.3%	16.9%	16.0%	15.7%	15.5%	15.0%	14.2%	14.0%	13.6%	11	-7.69	-36.1%
NORTH CAROLINA	21.4%	21.3%	18.0%	16.5%	15.6%	15.03	14.8%	15.4%	15.3%	14.9%	14.8%	14.7%	14.4%	14.0%	14.0%	13.7%	13.7%	12	-7.72	-36.0%
NORTH DAKOTA	21.3%	21.2%	19.8%	19.1%	18.7%	17.97	18.3%	19.0%	19.3%	19.1%	19.1%	19.1%	18.2%	17.7%	17.5%	16.4%	17.1%	34	-4.15	-19.5%
OHIO	25.4%	25.4%	24.5%	24.1%	22.0%	21.57	21.6%	21.8%	22.0%	21.3%	20.4%	20.1%	19.3%	18.4%	17.8%	17.4%	17.1%	33	-8.30	-32.6%
OKLAHOMA	27.3%	27.5%	25.5%	23.0%	21.7%	21.47	20.9%	20.7%	21.0%	20.2%	19.9%	19.6%	19.4%	19.4%	19.6%	20.4%	19.8%	50	-7.57	-27.7%
OREGON	21.5%	21.3%	19.2%	19.1%	18.3%	18.41	17.1%	17.8%	18.5%	16.8%	17.3%	17.4%	16.9%	17.0%	15.2%	14.5%	14.3%	16	-7.17	-33.4%
PENNSYLVANIA	22.3%	22.2%	21.1%	20.5%	18.8%	18.30	17.9%	17.6%	17.6%	17.3%	16.6%	16.7%	16.0%	16.0%	15.9%	15.7%	15.7%	25	-6.65	-29.8%
RHODE ISLAND	24.0%	23.9%	20.2%	20.3%	17.5%	16.87	16.5%	17.0%	17.2%	17.3%	17.0%	17.0%	17.2%	17.5%	17.5%	17.5%	17.6%	38	-6.36	-26.5%
SOUTH CAROLINA	20.7%	20.6%	18.3%	17.2%	15.5%	15.32	15.6%	15.3%	15.5%	14.6%	14.2%	14.3%	13.9%	14.1%	13.9%	14.0%	14.9%	18	-5.76	-27.8%
SOUTH DAKOTA	21.5%	21.5%	20.5%	20.0%	18.6%	17.99	18.1%	18.2%	18.4%	18.1%	17.7%	16.4%	16.5%	16.2%	16.2%	16.3%	17.0%	32	-4.49	-20.9%
TENNESSEE	30.0%	29.3%	27.2%	25.0%	23.4%	23.08	22.7%	22.5%	22.8%	21.6%	20.6%	20.3%	19.3%	19.2%	18.1%	17.3%	17.2%	35	-12.71	-42.4%
TEXAS	28.8%	28.9%	28.0%	27.9%	26.5%	25.72	25.3%	24.6%	23.8%	23.2%	22.5%	20.9%	20.2%	19.2%	18.5%	18.1%	17.3%	36	-11.58	-40.1%
UTAH	27.1%	26.9%	26.4%	25.0%	21.7%	21.88	23.1%	22.8%	21.2%	20.4%	16.6%	15.8%	18.2%	17.0%	16.4%	17.9%	17.0%	31	-10.10	-37.3%
VERMONT	25.4%	25.7%	23.4%	20.3%	18.8%	18.23	18.0%	19.2%	18.9%	18.8%	17.6%	16.2%	16.5%	16.8%	16.8%	16.0%	16.4%	30	-9.01	-35.5%
VIRGINIA	23.0%	22.9%	22.1%	22.1%	19.7%	19.04	18.2%	18.5%	18.4%	18.1%	17.2%	17.0%	17.0%	16.8%	15.7%	15.5%	15.8%	26	-7.23	-31.4%
WASHINGTON	22.3%	21.8%	20.6%	20.2%	18.6%	17.83	17.5%	17.0%	17.6%	17.0%	16.7%	15.9%	15.8%	15.5%	15.1%	15.4%	15.1%	20	-7.21	-32.3%
WEST VIRGINIA	20.5%	21.5%	20.4%	19.8%	16.5%	16.08	16.6%	16.2%	16.4%	16.7%	16.0%	16.1%	15.7%	16.4%	17.1%	15.5%	15.5%	24	-4.98	-24.3%
WISCONSIN	19.0%	18.9%	18.0%	17.7%	16.3%	15.41	14.6%	14.2%	14.3%	13.9%	13.6%	13.2%	13.0%	12.8%	12.7%	13.0%	12.9%	9	-6.16	-32.3%
WYOMING	16.8%	16.9%	17.5%	17.0%	17.9%	16.52	15.6%	15.1%	14.6%	13.9%	12.9%	12.4%	12.5%	12.1%	11.5%	12.7%	12.8%	7	-4.07	-24.2%